

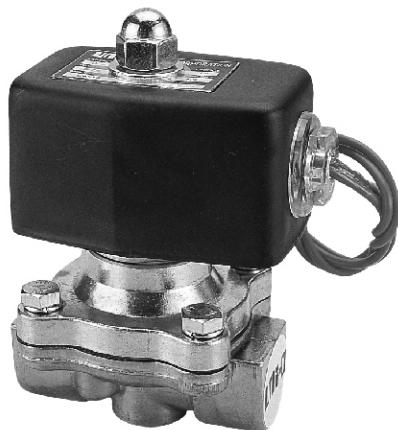
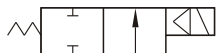
MUG series Normally closed

SOLENOID VALVE



Model: MUG-10, 15, 20, 25, 35, 40, 50

Available fluid: Gas, vacuum.



Specification:

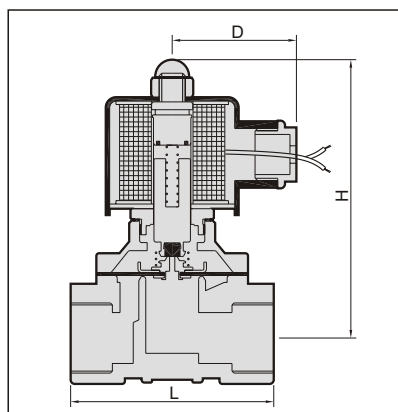
- 2-WAY normally closed solenoid valve.
- Type MUG with sand high temperature.
- Standard voltage: AC 110V/220V (50/60 Hz).
- Voltage is with $\pm 10\%$ differential.
- Simple construction & easy assembly.
- Other voltage of AC/DC available when required.
- Installation: Mountable in leave position only. (Prohibition in vertical position).
- Port thread BSP, NPT, are also available.

Not for fluid of:

- Liquid when heat, solid when cool.
- Corrosive fluid.
- Viscosity over 20 cst.
- Temperature over 80 °C.

Caution:

- Pipes must be washed neat and clean before fitted.
- A Y-STRAINER has to be installed in the front of solenoid valve, that is best for long life.



Material:

Parts name	Material
Body	Brass / Bronze
Bonnet nut	Brass / Bronze
Coil	Special copper wire
Diaphragm	NBR
Disc	NBR
Fixed steel	Special st. steel
Spring	Stainless steel

Model (order code)	Connection pipe size	Cv	Orifice (mm)	Fluid temp	Max. operating pressure diff. kgf/cm ²						L (mm)	H (mm)	D (mm)	Weight (kg)
					Steam	Water	Air	Light oil	Gas	Vacuum				
MUG-10	PT 3/8"	2.4	10	-5°C ~ 80°C	-	-	-	-	0~7	0~10 ⁻³ Torr	70	100	50	0.9
MUG-15	PT 1/2"	4.5	15		-	-	-	-	0~7	0~10 ⁻³ Torr	70	100	50	0.9
MUG-20	PT 3/4"	8.6	20		-	-	-	-	0~7	0~10 ⁻³ Torr	73	102	50	1.0
MUG-25	PT 1"	12	25		-	-	-	-	0~7	0~10 ⁻³ Torr	93	106	50	1.8
MUG-35	PT 1 1/4"	24	35	80°C	-	-	-	-	0~7	0~10 ⁻³ Torr	125	140	58	3.2
MUG-40	PT 1 1/2"	28	40		-	-	-	-	0~7	0~10 ⁻³ Torr	125	140	58	3.5
MUG-50	PT 2"	48	50		-	-	-	-	0~7	0~10 ⁻³ Torr	167	170	58	5.4

※ The pressure ratings indicated above are based on AC110V/220V. The maximum pressure may vary in case on DC/AC24V.
Special order: AC380V, 415V, 440V.